

ICE TECH

powered by  Cold Jet®

Evolution Line

Elite 20



Evolve the way you clean your equipment with the world's first multi-power dry ice blasting machine! The Elite 20 contains a 24 volts DC motor that utilizes a higher torque to eliminate freeze ups. From the complete control over ice and air consumption to the worry free troubleshooting, the Elite 20 provides a dry ice blasting experience that is divergent in the industry.

- Stainless steel body
- Air only blasting option
- Machine controlled gun light
- More powerful motor
- Insulated hopper

Made with a pure stainless steel frame, the Elite 20 is a dynamic machine designed to give you the thorough clean you need by supplying a gentle way to decontaminate equipment. Perfect for lighter applications like those found in the pharmaceutical and food industries, the Elite 20 is the only tool for cleaning and maintaining equipment. The user friendly control panel gives you easy access to controls and maintains blasting parameters.

IceTech Dry Ice Blasting:

- Multifunctional
- Environmentally-friendly
- Non-abrasive
- Non-toxic
- Non-electrical conductive
- Completely dry
- Void of secondary waste
- Cleans equipment online
- Cleans equipment at operating temperature
- Offer low pressure and high pressure blasting capabilities
- Less power consumption
- Lowest cost of ownership on the market

What makes the Evolution Line different?

The Evolution Line provides the perfect universal dry ice blasting experience. New, quick change dosing disc allows for a faster replacement, which leads to shorter downtime and lower maintenance costs. The insulated lid and hopper helps eliminate clumping of the dry ice, and provides troublefree blasting time. The stainless steel frame provides a high strength, scratch-resistant machine designed to keep up with the toughest conditions, while still suitable for lighter applications.

TECHNICAL DATA:	Elite 20 ¾"
Dimensions mm/inch:	
Length:	739.7 / 29
Width:	450 / 17.7
Height Incl. handle:	1080 / 42.5
Weight:	
kg./lbs:	104 / 230
Dry Ice Capacity:	
liter / ft ³ :	20 / 0.71
Dry Ice Consumption:	
kg/hr:	30 - 100
lbs/min:	1.1 - 3.7
Supply Pressure:	
bar:	min 5 - max 16
psi:	min 72 - max 232
Blasting Pressure:	
bar:	min 2 - max 16
psi:	min 29 - max 232
Air Consumption:	
Nm ³ /min:	0.7 - 10
cfm:	25 - 353
(depending on nozzle combination)	
Compressed Air Connection:	1" claw coupling
Air Quality:	According to ISO 8573-1 Class 3 for environment temperature below + 5°C / 41°F
Power Consumption:	500 W. 100V - 240V AC 50/60 Hz + PE (GND)
Blasting Hose:	¾" Single Hose System
Noise:	Noise level up to 120 dB(A) Depending on blasting pressure, nozzle combination and material surface

IceTech provides the most effective solution! The Elite 20 comes with a 7.5 meter / 24 ft blasting hose, 10 meter / 32 ft air supply hose, and a lighted gun with nozzle to maximize performance whatever the application.

IceGun Evolution Line

The IceTech blasting gun is designed to combine with a broad range of nozzles and accessories.

Available:
IceGun with Light
IceGun / no Light



Blasting hose

The HD blasting hose is made of an abrasion resistant, conductive natural and synthetic rubber.

Available:
7.5m / 24ft
Blasting Hose 3/4"



10 meters / 32 ft Air Supply Hose 1" air supply hose

Abrasion-resistant and long lasting compressed air hose.

Available:
10 meters / 32 ft Air Supply Hose 1"



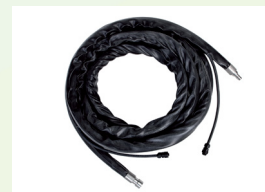
For a variety of cleaning options utilize IceTech's wide range of nozzles. From standard round nozzles, to different sizes extension bends, IceTech has the perfect solution for your application. With IT3 box of nozzles and endless blasting and air hose combinations, you can conquer any cleaning challenge!

Elite 20 3/4"

Blasting Hose 3/4" HD
Dimensions (m/ft)

1.5 / 4.9, Item no.: 504725
5 / 16, Item no.: 504726
7.5 / 24, Item no.: 504727
10 / 32, Item no.: 504728
15 / 49, Item no.: 504729

Blasting Hoses



Elite 20 3/4"

Air Supply Hose 1"
Dimensions (m/ft)

10 / 32, Item no.: 90200; US: 90193
20 / 65, Item no.: 90198; US: 90228

Air Supply Hoses



Includes the most commonly used types of nozzles, delivered in a flight case. Different nozzles for different applications.
Dimensions (mm/inch) - Length: 460 / 18.110 Width: 350 / 13.779
Weight (g/lbs): 3500 / 7.716
Item no.: 90399

IT3 Box of Nozzles



Expand your blasting coverage with the IceTech nozzles. IceTech options allow you to obtain the perfect blasting coverage and are also available in plastic. You can choose between three types of nozzle combinations, in different sizes: round, flat or cone nozzles.

Flat Nozzle, 20 mm, complete
Incl. Nozzle insert, Ø 7-16
[Cleaning width approx. 20 mm]

Dimensions [mm/inch]
Length: 305 / 12
Width: 40 / 1.57
Weight: g: 500 / lbs: 1.102

Item no.:
502714



Flat Nozzle, 50 mm, complete 502666
Incl. Nozzle insert, Ø 8-16
[Cleaning width approx. 50 mm]

Dimensions [mm/inch]
Length: 310 / 12.2
Width: 56 / 2.2
Weight: g: 340 / lbs: 0.749

Item no.:
502666



Special nozzle, Ø 7 mm, 503045
with POM protection

Dimensions [mm/inch]
Length: 160 / 6.30
Width: Ø7
Weight: g: 100 / lbs: 0.22

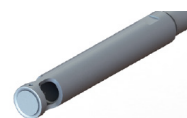
Item no.:
503045



Special Cone Nozzle, 360°, 91190
Complete with Cone type A

Dimensions [mm/inch]
Length: 147 / 5.787
Weight: g: 74 / lbs: 0.163

Item no.:
91190



IceTech Extension Bends and Pipes provide additional cleaning options for tough to reach places. Insulated options are also available.

Extension Bend 45°
Incl. adapter no. 91003
and check nut no. 91009

Dimensions [mm/inch]
Length: 310 / 12.2 Width: Ø14
Weight: g: 140 / lbs: 0.308

Item no.:
91204S



Extension Bend 90°
Incl. adapter no. 91003
and check nut no. 91009

Dimensions [mm/inch]
Length: 310 / 12.2 Width: Ø14
Weight: g: 160 / lbs: 0.351

Item no.:
91203S



Extension Pipes
Adapter [Accessory]
Item no.: 91003

Dimensions [mm/inch]
Length: 250 / 9.84 Width: Ø14
Weight: g: 120 / lbs: 0.26

Item no.:
91224



Extension Pipes 91222
Adapter [Accessory]
Item no.: 91003

Dimensions [mm/inch]
Length: 500 / 19.6 Width: Ø14
Weight: g: 220 / lbs: 0.48

Item no.:
91222

