

Industry Overview: Engineered Wood

Increased Safety and Effectiveness = More Profitability



A Faster, Better Clean.

Most current cleaning processes utilize angle grinders which can be time consuming and dangerous, requiring cleaners to work within the machines in close proximity to hot residues and dust. In addition, this manual cleaning method is ineffective due to unreachable areas of the machine where parts simply don't get cleaned. Dry ice cleaning provides a fast, safe and economical alternative to traditional cleaning methods.

Discover Cold Jet.

Contact Cold Jet today to speak with an industry expert and choose the best cleaning solution for your application. Call **1.800.337.9423** or visit us online at www.coldjet.com to learn more.

APPLICATIONS

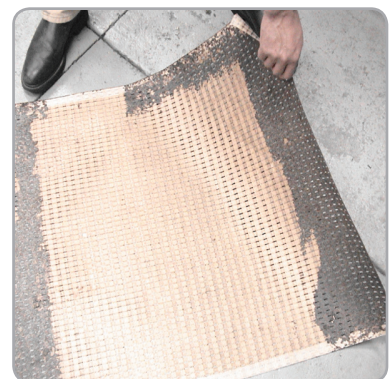
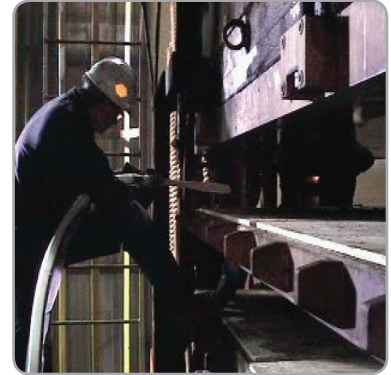
- OSB presses
- Sanding Belt
- Wet Scrubber
- Dryer
- Peeler / Lathe
- Glue Applicator
- Ventilation Blades
- Pitch & Resin Removal
- Finger Joint Blade Holder

KEY BENEFITS

- Reduce fire hazard
- Reduce labor costs
- Reduce downtime
- Non-abrasive process
- Increase employee safety
- Eliminate secondary waste
- Clean in-place; no cool down required

REFERENCES

Join industry leaders already benefiting from Cold Jet dry ice blast cleaning systems.



Cold Jet vs traditional cleaning methods.

CLEANING METHOD	NO SECONDARY WASTE	NON-CONDUCTIVE	NON-TOXIC*	NON-ABRASIVE
Dry Ice Blast Cleaning	●	●	●	●
Sand Blasting		●	●*	
Soda Blasting		●	●*	
Water Blasting			●*	●
Hand Tools	●		●	
Solvents/Chemicals				●

* Upon contact, traditional blasting materials become contaminated when used to clean hazardous substances and objects. These blasting materials are then classified as toxic waste and require appropriate safe disposal.